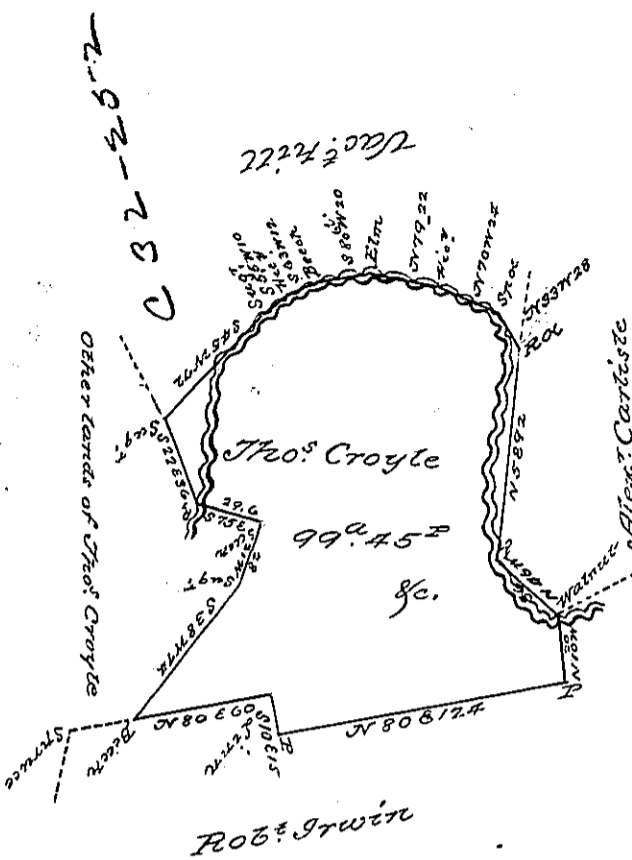


*N.B. Observe Enclosed is the location
name Surveyed by Tho: Smith in 1795
and down to a - the nearest corner corner
within 472' of the Creek*



a-2-208

Situate on the North Fork of ^{Little} Conemaugh in the Town-
ship of Summerhill & County of Cambria, Inclu-
ding a Small improvement Surveyed the 27th June
1816 in pursuance of a warrant granted to Tho: Croyle
dated March 15th 1816 Containing twenty nine acres &
fourty five qrs & allowance of 6 qrs & 3/4

To Richd. T. Leech Esqr. }
Surveyor General } W. O'Keefe
D.S.

IN TESTIMONY that the above is a copy of the original remaining on file in the
Department of Internal Affairs of Pennsylvania, made con-
formably to an Act of Assembly approved the 16th day of
February, 1833, I have hereunto set my Hand and caused
the Seal of said Department to be affixed at Harrisburg, this
First day of June 1897
James W. Latta
Secretary of Internal Affairs.